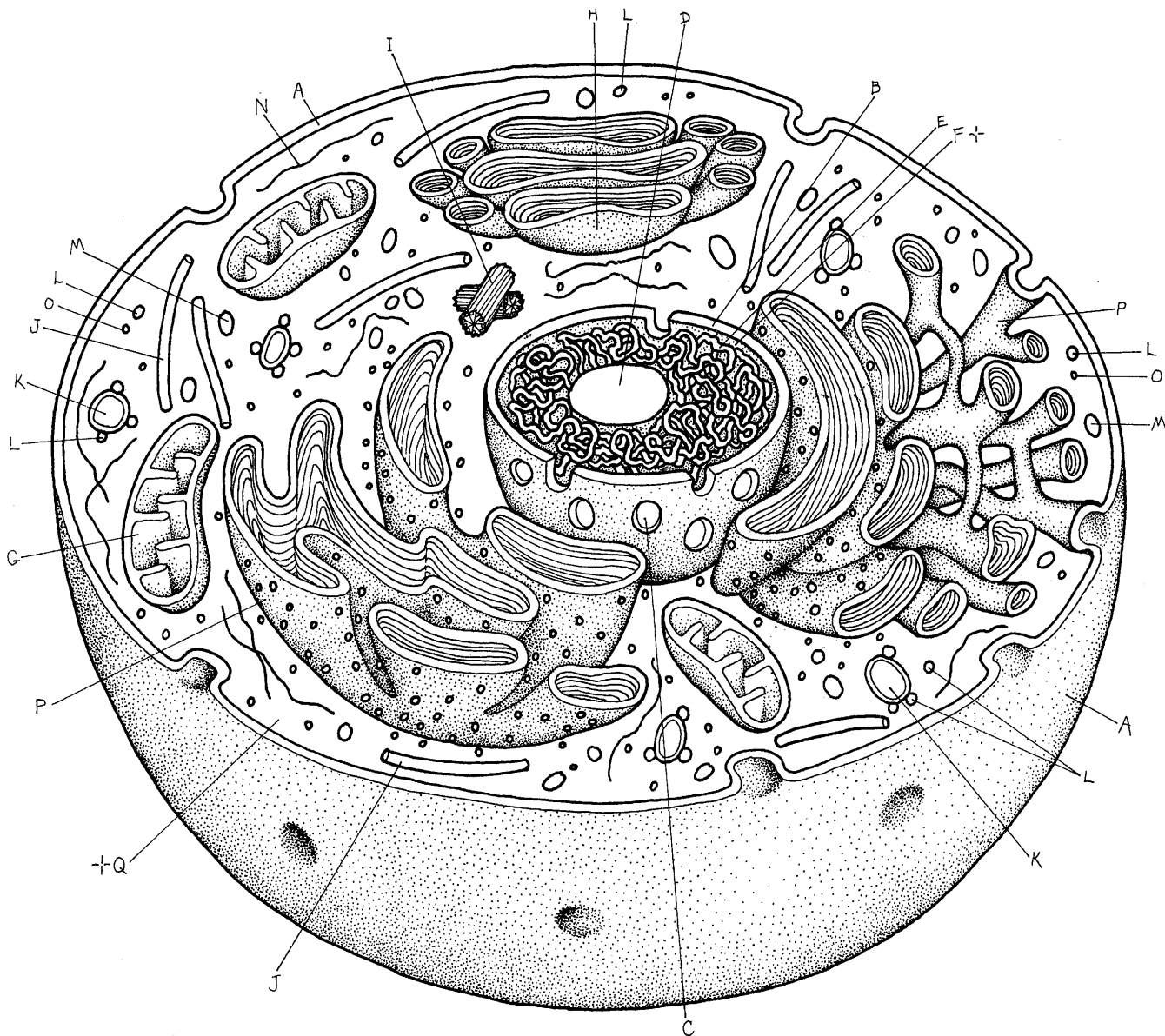


ANIMAL CELL.

CELL MEMBRANE_A
 NUCLEUS_★
 NUCLEAR ENVELOPE_B
 NUCLEAR PORE_C
 NUCLEOLUS_D
 CHROMATIN_E
 NUCLEAR SAP_{F+}
 CYTOPLASM_★
 MITOCHONDRION_G
 GOLGI COMPLEX_H

CENTRIOLE_I
 MICROTUBULE_J
 VACUOLE_K
 LYSOSOME_L
 MICROBODY_M
 MICROFILAMENT_N
 RIBOSOME_O
 ENDOPLASMIC RETICULUM_P
 HYALOPLASM_{Q+}



PLANT CELL.

CELL MEMBRANE_A
 CELL WALL_B
 PLASMODESMA_C
 VACUOLE_D
 TONOPLAST_{D'}
 CRYSTAL_E
 PLASTIDS_F
 CHLOROPLAST_F
 LEUCOPLAST_G
 CHROMOPLAST_H
 GOLGI COMPLEX_I
 RIBOSOME_J

ENDOPLASMIC RETICULUM_K
 MITOCHONDRION_L
 MICROTUBULE_M
 MICROFILAMENT_N
 LYSOSOME_O
 MICROBODY_P
 HYALOPLASM_Q
 NUCLEUS_R
 NUCLEAR ENVELOPE_R
 NUCLEAR PORE_S

